


EC-Light-Output

easyCONTROLS™ Lighting Relays Controller



- Control up to 16 two-wire relays, or 8 three-wire relays, or 8 breaker-relays
- 3 different models available for retrofit applications
- Easy programming of relay groups

<p>Applications</p> <ul style="list-style-type: none"> - Designed to meet the requirements of any commercial or industrial lighting application, including accent lighting. - Optimized for retrofit / expansion projects and can be easily incorporated into a building's existing lighting control architecture. - Developed to control most common relays on the market, such as two wire, three wire and breaker relays. 	 <p>EC-Light-Output is a LONWORKS lighting control system designed to meet the requirements of any commercial or industrial application. It is optimized for energy efficient lighting applications including general area or accent lighting as well as lighting schemes, sequences and relay group management. With advanced lighting features such as time delay override, warning flickering before lights out and maintenance time scheduling, it allows for versatility and energy efficiency. EC-Light-Output is a networked lighting controller which interfaces with the LONWORKS network and its HVAC subsystem, providing an integrated energy management system.</p> <p>The controller is fully configurable using LNS based plug-ins, with a network management tool such as Distech Controls' Lonwatcher. Using the plug-in, relays can be organized into groups allowing the following parameters to be set for additional energy efficiency:</p> <ul style="list-style-type: none"> • Shut-down notification through flickering of lights to indicate that the system is about to turn off, giving building occupants time to to bypass the system if necessary or to leave the building. • Maintenance/security crew bypass of lighting system for a specific amount of time. • Hold time through switch or motion detection, allowing the user to initiate the system for a specified time period. • Time delay override, allowing a user to override the lighting system for a specific amount of time. <p>The easyCONTROLS product line is built to meet rigorous quality standards and carries a two-year warranty. The complete line of easyCONTROLS controllers is designed for use with any LNS based and/or any other open and interoperable system – such as EC-Net. This provides both the contractor and the end user with the flexibility of using “best of breed” products in system design.</p>
<p>Features</p> <p>Interoperability</p> <ul style="list-style-type: none"> - Based on LONWORKS® technology for peer-to-peer communication between controllers. - Incorporates multiple LONMARK® Functional Profiles, including GroupCtrl #20602, SceneDispatch #20609 and RelayPanelCtrl #20601. <p>Hardware</p> <ul style="list-style-type: none"> - Software configurable - Operate controller as a stand-alone unit or as part of a networked system. - 3 different models to accommodate common relays such as two-wire, three-wire and breaker relays. <p>Software Plug-in</p> <ul style="list-style-type: none"> - Powerful and intuitive LNS® based plug-in provides easy customization of outputs, control sequences as well as displayed options and parameters. - Configure various Relay Groups and Scenes to control advanced lighting schemes for various rooms and work areas. - Provides real-time monitoring of the lighting status and direct operation of the system. 	

EC-Light-Output Specifications

Controller Cards Specifications

Item	Specification
Operating Temperature	0°C to 50°C (32°F to 122°F)
Processor	Neuron [®] , 3150 [®] , 8 bits; 10MHZ
Transceiver	FTT-10A; 78 Kbps
Power Supply	24 VAC with midpoint tap
Dimensions	110 x 180 mm (4.3 x 7.0 in)
Output Controller	16 two-wire relays*, or 8 three-wire relays*, or 8 breaker-relays*. *According to the model selected
Agency Approvals	IEC 60255-22-4: Fast transient disturbance test
LED	Indicators for controller card power and communications.

Selection Guide

Product Code	Description
PXXGE-1842901X0	EC-Light-Output controller to connect 16 two-wires relays
PXXGE-1842903X0	EC-Light-Output controller to connect 8 three-wires relays
PXXGE-1842905X0	EC-Light-Output controller to connect 8 breakers relays

Other Peripherals

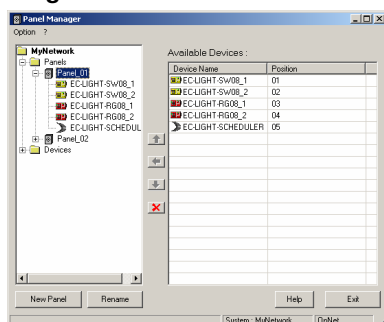
In addition to the Distech Controls easyCONTROLS product line, we invite you to take advantage of our array of peripheral product offering. We are confident our peripheral product offering can:

- Facilitate your ordering process;
- Simplify your search for equal or better prices on all items;
- Help standardize your purchasing process by providing quality and performance-proven products.

Please contact sales@distech-controls.com for a complete list of available products and peripherals.

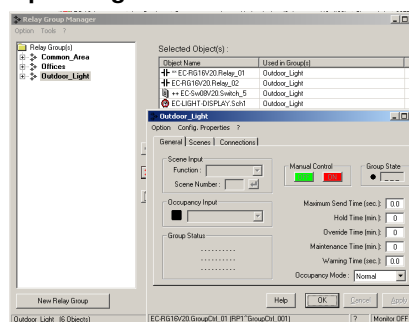
Software Preview

Panel Manager



The Panel Manager provides a virtual representation of the physical panel within a network management tool such as Lonwatcher and automatically sets the output numbering scheme.

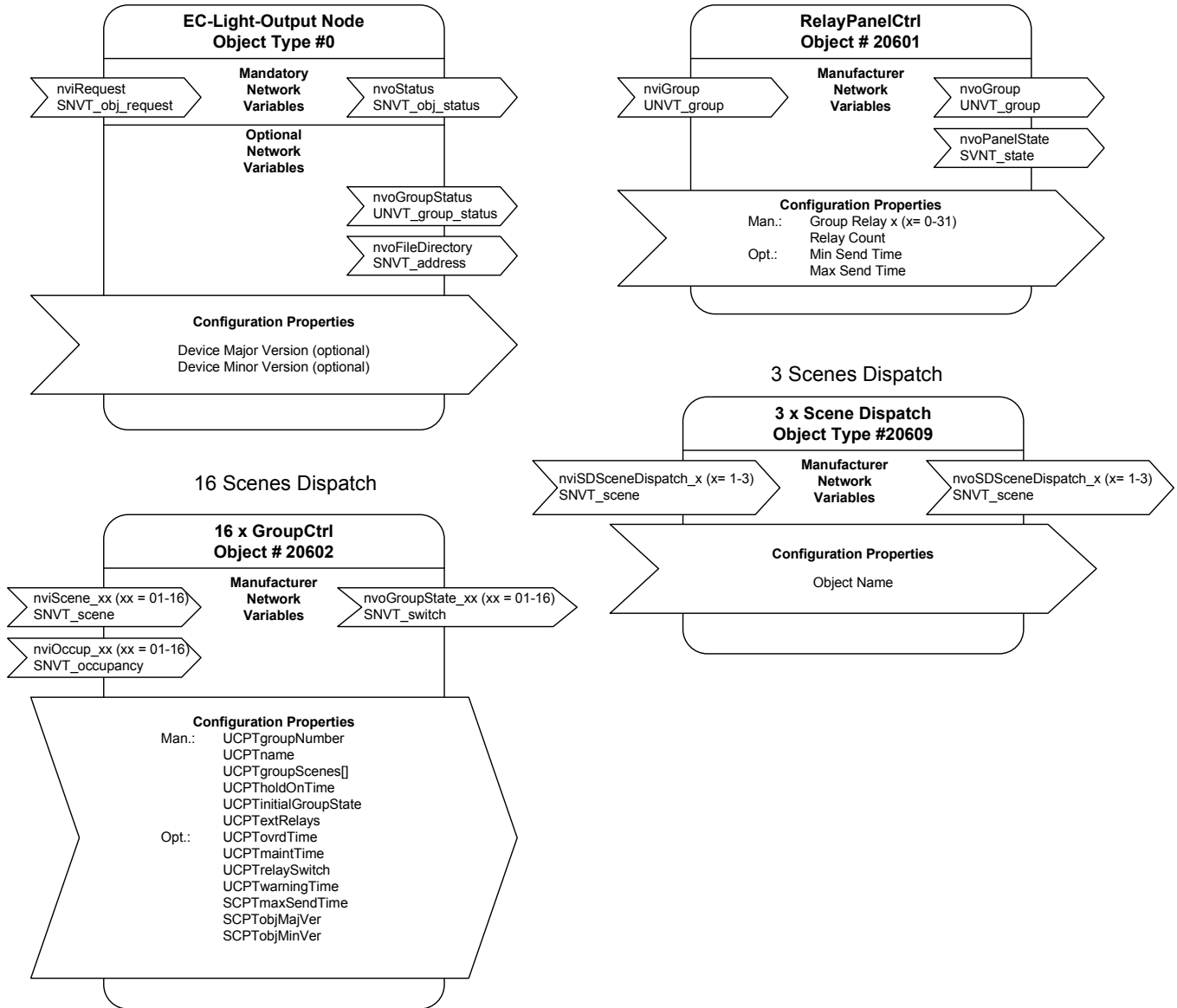
Relay Group Manager



The Relay Group Manager is used to assign relays or inputs from different physical panels to the same logic/control group. It is also used to define assignment to switches, sensors and relays. Also permits configuration of scenes with the scene editor.

LNS based plug-ins can be used with any LNS based network management and GUI tools, such as Distech Controls' Lonwatcher or Londisplay.

LONMARK® Objects & Network Variables



Specifications subject to change without notice. easyCONTROLS and Distech Controls logos are trademarks of Distech Controls, Inc.; LONWORKS, LONMARK, LonTalk, LNS and LON are registered trademarks of Echelon Corporation.



05DI-DSLTOU-10

EC-Light-Output

Distech Controls, Inc
 Tel. Toll-free North America: 1-800-404-0043
 Tel. International: 1-450-444-9898
<http://www.distech-controls.com>
sales@distech-controls.com