

EC-Light Panel

easyCONTROLS™ Lighting Control System

- Standard sizes include 8 , 16 , 32 or 64 relays.
- Connect inputs such as low-voltage switches and occupancy sensors.
- Standard with HID relays.



Applications

- Designed to meet the requirements of any commercial or industrial lighting application, including accent lighting or general lighting
- Management of relay groups and lighting schemes.
- Connect to a wide range of input switches and sensors.

Features

Interoperability

- Based on LONWORKS® technology for peer-to-peer communication between controllers.
- Incorporates multiple LONMARK Functional Profiles, including GroupCtrl #20602, Switch #3200, SceneInterface #20604, OccupSensor #1060, PatternCtrl#20603, ConstantLightCtrl #3050, RelayPanelCtrl#20601, among others.

Hardware

- Standard sizes with 8, 16, 32 or 64 relays.
- Multi-voltage options (120, 277 and 347 VAC) with movable protection plate between high and low voltage sections.
- Software configurable input card with 8 low voltage switches and optional LED or 16 dry contacts
- Software configurable output card(s) with 16 two-wire relays.
- Removable hinged door with key lock.
- Box knockouts located on all sides of the panel to facilitate panel junction and wire entry.
- Operate controller as a stand-alone unit or as part of a networked system.

Relays

- 2-wire latching relays that are lighting load rated for standard 20 Amps branch circuits.
- Heavy duty HID relays are suitable for all types of lighting loads including capacitor corrected HID ballasts.
- Relays are fully rated for 20 Amps tungsten and inductive loads at 120 or 277 or 347 Volts. This relay is designed to withstand the high inrush currents found in some of the new electronic ballasts. The oversized contact mechanism is rated to withstand 2,000 Amps inrush current and 1,500 Amps short circuit. Relays contain a manual operating lever with ON/OFF status indicator.

Software Plug-in

- Powerful and intuitive LNS® plug-in provides easy customization of hardware I/O, control sequences as well as displayed options and parameters.
- Configure various Relay Groups and Scenes to control advanced lighting schemes for various rooms and work areas.



EC-Light is a complete LONWORKS lighting control system. Designed to meet the requirements of any commercial or industrial application, EC-Light allows energy efficient lighting applications including general area or accent lighting as well as lighting schemes, sequences and relay group management. With advanced lighting applications such as time delay override, warning flickering before lights out and maintenance time scheduling, it allows for versatility and energy efficiency. EC-Light is a networkable lighting system which interfaces with the LONWORKS network and its subsystems (such as HVAC), providing an integrated energy management system.

Mounted in steel enclosures, the EC-Light Panels are available in sizes 8, 16, 32 and 64 relays and come standard with input controller, heavy-duty relays, output controllers, 120/277/347 Volt transformer and a movable protection plate between high and low voltage sections. For additional functionality, an EC-Light-Scheduler or EC-Light-Display can be mounted onto the panels.

Each input controller allows for 8 low voltage switches, which share a common low voltage wiring run thus eliminating expensive multiple home runs or 16 dry contacts. Furthermore, the input controller is compatible with low-voltage switches, and sensors, such as occupancy or photocell sensors. The output controls a selection of two-wire relays, allowing for 16 outputs per controller. The HID, two-wire relays offer true feedback and manual override, are latched and have a life cycle of 50,000 cycles. Relays can be organized into groups allowing the following parameters to be set for additional energy efficiency:

- Warning period through flickering of lights to announce system will turn off, giving time for local users to bypass the system if necessary or to leave the building.
- Maintenance/security crew bypass of lighting system for a specific amount of time.
- Hold time through switch or motion detection, allowing the user to initiate the system for a specified time period.
- Time delay override, allowing a user to override the lighting system for a specific amount of time.

The EC-Light panels are fully configurable using LNS based plug-ins, with a network management tool such as Distech Controls' Lonwatcher.

The easyCONTROLS product line is built to meet rigorous quality standards and carries a two-year warranty. The complete line of easyCONTROLS controllers is designed for use with any LNS based and/or any other open and interoperable system – such as EC-Net. This provides both the contractor and the end user with the flexibility of using “best of breed” products in system design.

Relay Panel

Panel Size	Dimensions	Input Cards	Output Cards
8 Relays*	381 x 381 x 101 mm (15 x 15 x 4 in)	1	1
16 Relays**	592 x 381 x 101 mm (23.3 x 15 x 4 in)	1	1
32 Relays**	850 x 508 x 101 mm (33.5 x 20 x 4 in)	1	2
64 Relays**	1250 x 508 x 101 mm (49.2 x 20 x 4 in)	1	4
* Cold rolled steel 16 gage ** Cold rolled steel 14 gage Union Made USWA Steel-Workers AFL-CIO-CLC Agency Approvals CSA Listed & cULus Listed			

Controller Cards Specifications

ITEM	SPECIFICATION
Operating Temperature	0°C to 50°C (32°F to 122°F)
Processor	Neuron [®] , 3150 [®] , 8 bits; 10MHZ
Transceiver	FTT-10A; 78 Kbps
Power Supply	24 VAC with midpoint tap
Dimensions	110 x 180 mm (4.3 x 7.0 in)
Input Controller	8 low voltage switches, or 16 dry contacts
Output Controller	16 two-wire relays. Refer to your Distech Controls representative for availability of other output controller.
Agency Approvals	IEC 60255-22-4: Fast transient disturbance test
LED	Indicators for controller card power and communications.

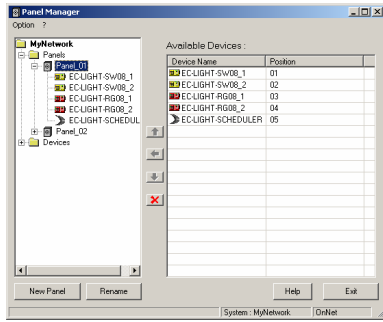
Heavy Duty HID Relays

ITEM	SPECIFICATION	
Type	Two-wire Relay	
Poles	1	
Electrical Life	30,000 operations or more at full load at 20CPM	
Mechanical Life	60,000 operations at 20CPM	
Inrush Capability	2,000A	
Max Operating Speed	20 CPM at nominal load	
Operate Time	Approx. 20 msec	
Release Time	Approx. 20 msec	
Initial Insulation Resistance	More than 100MΩ at 500 VDC	
Dielectric (Between Open Contacts)	1,694V for one minute	
Strength (Between Contacts & Coil)	2,500V for one minute	
Ambient Temperature	-30 to +50 °C (-22 to +149°F)	
Temperature Rise (At Normal Voltage)	Max. 65°C (149°F)	
Contact Arrangement	SPLT, Latching	
Contact Material	7/32" dia. Silver alloy	
Rating	UL Rating	CSA Rating
General Use	20A 300 VAC	20A 347 VAC
Tungsten	2,400W 120 VAC	2,400W 120 VAC
Electric Discharge Lamp	20A 300 VAC	20A 347 VAC
Motor Load 1/2 HP at	110-125 VAC	110-125 VAC
Motor Load 1-1/2 HP at	220-227 VAC	220-250 VAC

EC-LIGHT PANEL Specifications

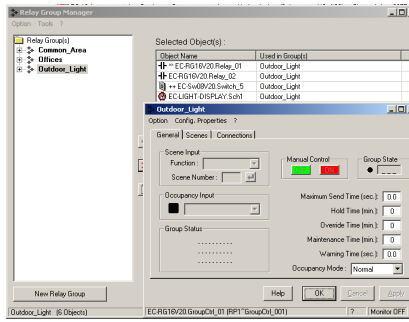
Software Preview

Panel Manager



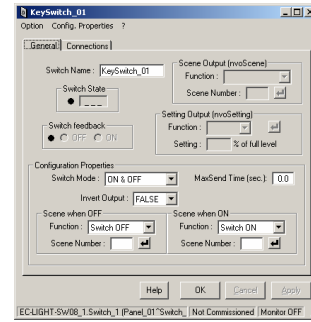
Create a virtual panel/representation of the physical panel within a network management tool such as Lonwatcher and automatically sets the output numbering scheme

Relay Group Manager



Assign relays or inputs from different physical panels to the same logic/control group. Define assignment to switches, sensors and relays. Also permits configuration of scene with scene editor.

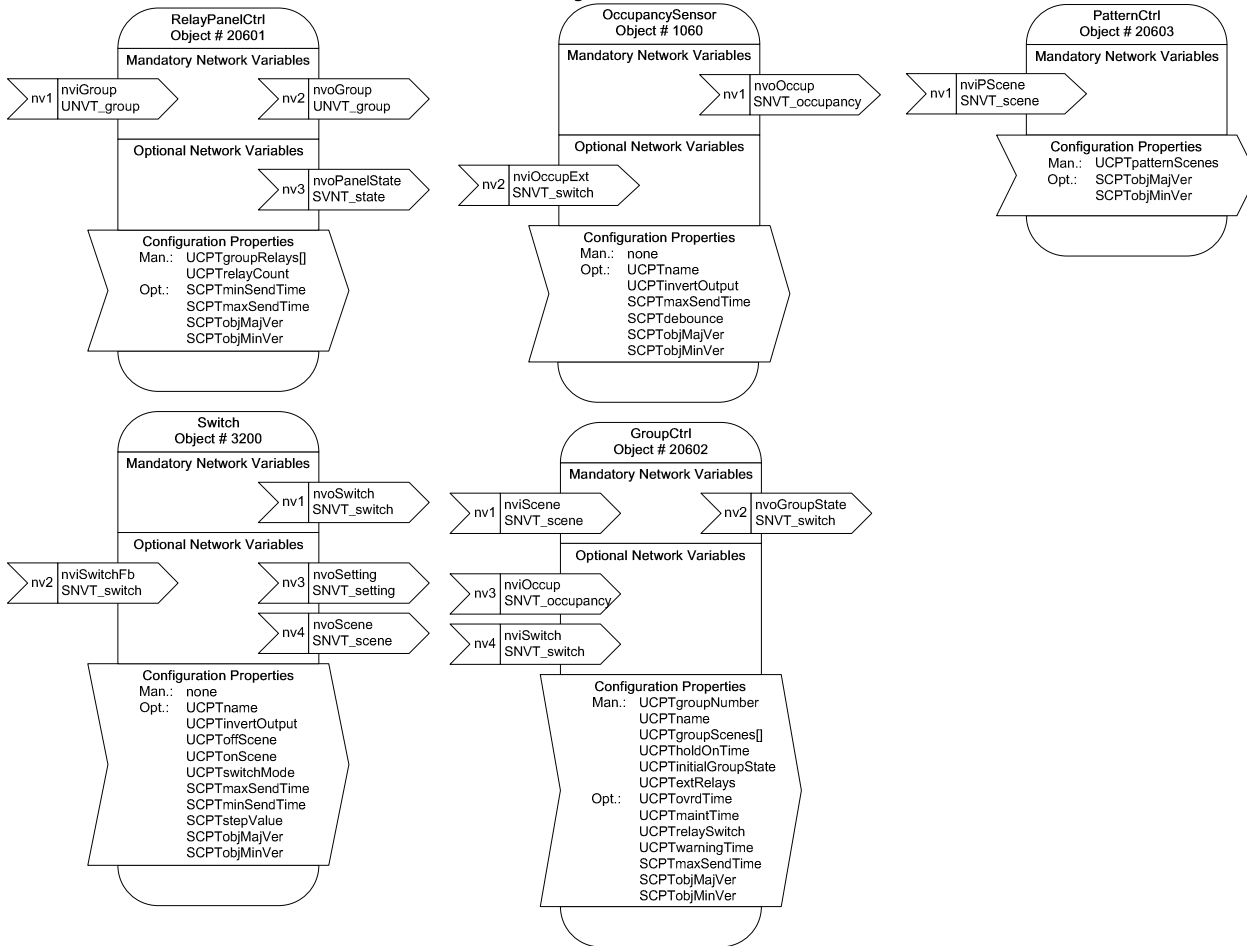
Input Configuration



Configure inputs for occupancy sensors, switches and scene interface. The plug-in dynamically adapts to the type of input selected

LNS Plug-ins can be used with any LNS based network management and GUI tools, such as Distech Controls' Lonwatcher or LonDisplay.

LONMARK® Objects & Network Variables



Specifications subject to change without notice. easyCONTROLS and Distech Controls logos are trademarks of Distech Controls, Inc.; LONWORKS, LONMARK, LonTalk, LNS and LON are registered trademarks of Echelon Corporation.



05DI-DSLTPAN-10

EC-Light Panel

Distech Controls, Inc

Tel. Toll-free North America: 1-800-404-0043

Tel. International: 1-450-444-9898

<http://www.distech-controls.com>

sales@distech-controls.com