

EC-Configure Series

With EC-Monitor

Benefits

- Simplifies controller configuration
- Reduces setup time
- User-friendly interface and operation
- Automatically selects operation sequences
- Adapts to controller type to display unique features

Features

Supported Platforms

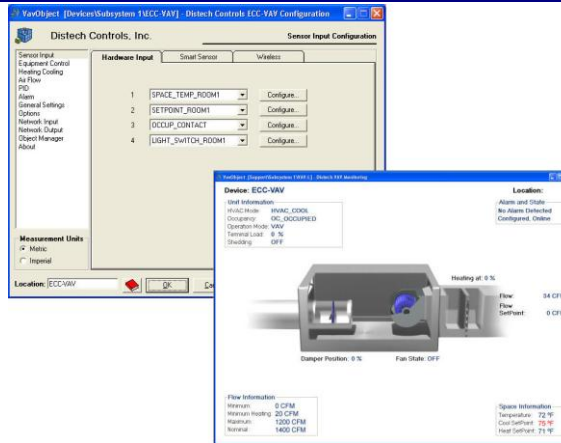
- LNS[®] Turbo 3.20 and greater
- Niagara^{AX} Framework[®] (EC-Configure only)

Supported Controllers

- EC-FCU-L, RTU-L, HPU-L, UV-L, VAV-L
- ECC-VAV, VAVS, PFCU Series
- ECC-301, 401, 520 (EC-Configure only)
- ECL-STATs, ECB-STATs (EC-Configure only)
- EC-Display, EC-Light-Display (EC-Configure only)
- EC-Scheduler, EC-Light-Scheduler¹ (EC-Configure only)
- EC-Light (EC-Configure only)

Other Features

- Intuitive user interface (UI) designed specifically to simplify application configuration
- Automatically selects operation sequence based on input and output configuration
- Displays prompts when users need to input important information
- Several configuration windows for easy programming of devices



Distech Controls' EC-Configure series, dynamic configuration tools, simplify BAS designing by laying out the necessary parameters required to configure the inputs, outputs and control sequences of the products involved. The EC-Configure series offers a user-friendly interface that can be used to setup a control sequence or system in a very short amount of time.

EC-Configure consists of a set of interfaces that are designed to simplify configuring and sequencing methods by prompting the user for the necessary configuration data. The controller then automatically selects the operation sequence according to the input and output configurations and dynamically adapts itself to the network variables that are bound to the controller.

The EC-Configure series can be used with any LNS-based software such as Distech Controls' Lonwatcher 3 or with a multi-protocol platform software supporting LONWORKS[®] devices such as Distech Controls' EC-Net^{AX} Pro powered by the Niagara^{AX} Framework.

EC-Configure can be used to setup all Distech Controls' configurable controllers.

EC-Configure is unique for each type of controller or application being configured though there are several interfaces that are common amongst most devices/applications.

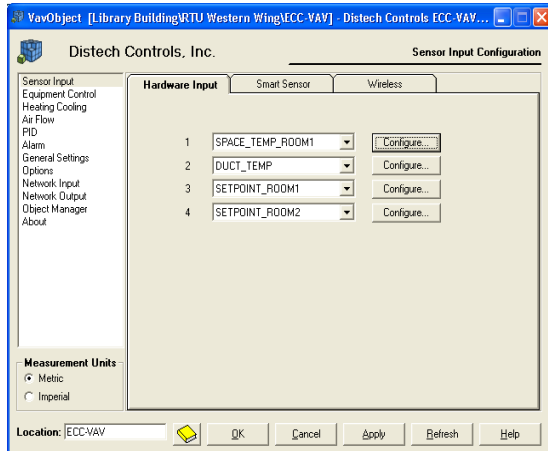
EC-Monitor is a Graphical User Interface (GUI) that monitors all device parameters including inputs, outputs, alarms and device status. The graphics in EC-Monitor dynamically adapt themselves to the configuration of the device as well as the real-time values being monitored. EC-Monitor can only be used with an LNS platform.

Distech Controls' quality management system is ISO 9001:2000 certified

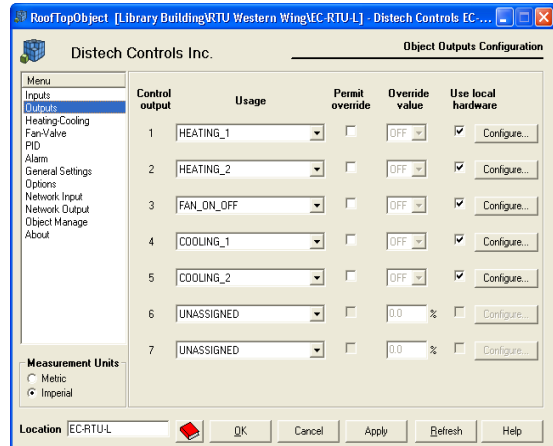
1. Does not presently have an EC-Configure EC-Net^{AX} wizard.

EC-Configure Series

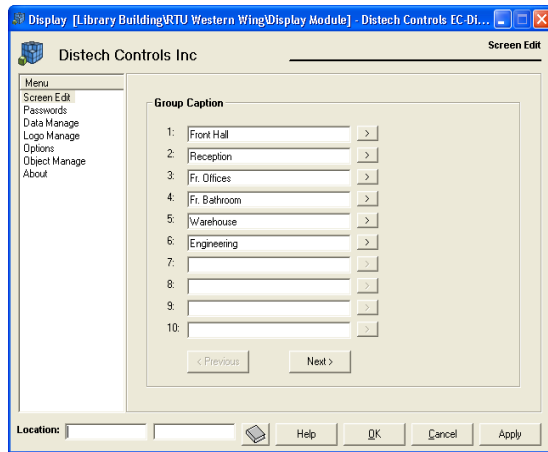
EC-Configure Examples



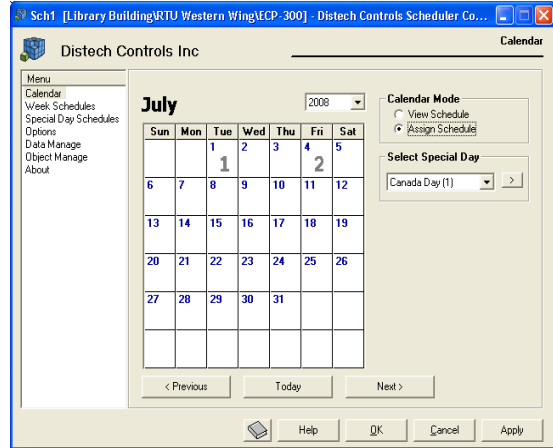
ECC-VAV Configuration Tool



EC-RTU-L Configuration Tool

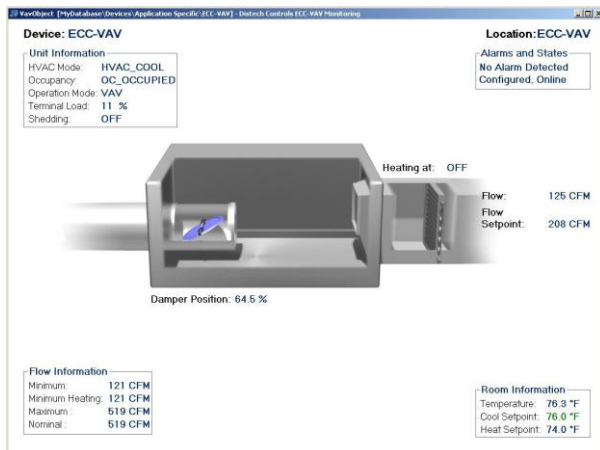


EC-Display Configuration Tool

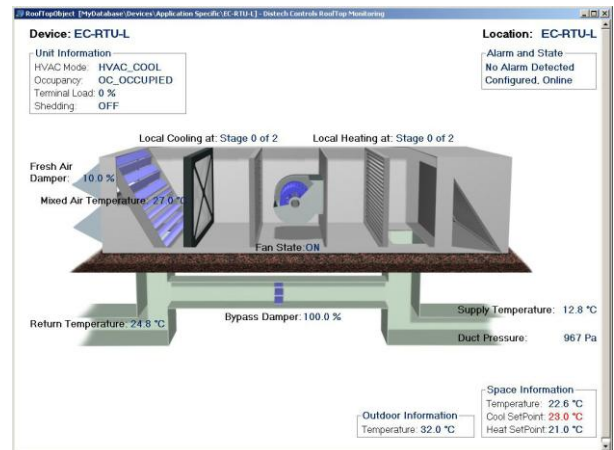


EC-Scheduler Configuration Tool

EC-Monitor Examples



ECC-VAV Monitor Tool



EC-RTU-L Monitor Tool

Specifications subject to change without notice.

Distech Controls logo is a trademark of Distech Controls Inc.; LONMARK, LONWORKS and LNS are registered trademarks of Echelon Corporation; Niagara^{AX} Framework is a registered trademark of Tridium, Inc.



05DI-DSECCFG-11

EC-Configure Series

Distech Controls, Inc.
Tel. toll-free North America: 1-800-404-0043
Tel. international: 1-450-444-9898
www.distech-controls.com
sales@distech-controls.com