

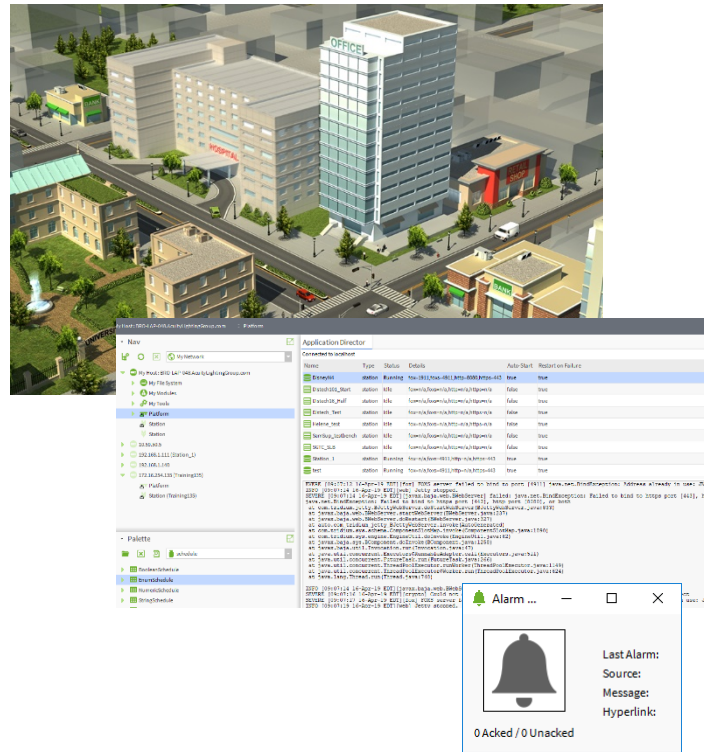


EC-Net 4 Operator Training

Course Outline

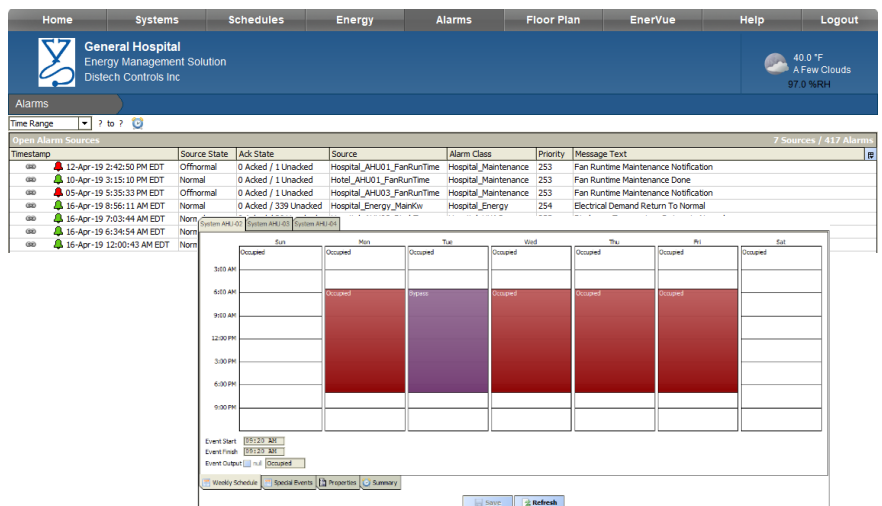
DAY 1

- Creating a new Station (demo)
- Commission an EC-BOS8 (demo)
- Workbench Interface Platforms vs Stations
- Simple Logic
- Intro to Graphics Extending Data Objects in EC-NET4
- Scheduling and Special Events



DAY 2

- Histories/Trends
- Alarming
- Supervisor to EC-BOS networking (demo)
- BACnet Network
- Additional Integration Graphic Functions
- Security and User Administration
- Navigation Schemes



Course Agenda

Getting Started

- LAB #1: Creating a New Station & Commissioning the EC-BOS
- LAB #2: Building a Simple Logic Solution (Cafeteria Application)

Building Simple Controls Logic and Graphics

- LAB #3: Building Additional Control Logic (Fitness Center Application)
- LAB #4: Creating a Simple PX Graphic
- LAB #5: Adding Totalizers to Track Runtime
- LAB #6: Adding Active Time to the PX Graphic

Schedules, Histories and Alarms

- LAB #7: Configuring Scheduled Special Events
- LAB #8: Collecting & Configuring History Trends
- LAB #9: Generating & Viewing Alarms

Station to Station Communication to the Niagara

- LAB #10: Creating a Supervisor Station on the Local Host
- LAB #11: Connecting to the Niagara Network (Demo)
- LAB #12: Sending Data Across the Niagara Network (Demo)

Integrating with Field Bus Controllers

- LAB #13: BACNET MS/TP Integration (Demo)
- LAB #14: Launching EC-gfxProgram (Demo)

Building Front End-Graphics

- LAB #15: Creating Additional PX Graphics

User Admin, Security and Navigation

- LAB #16: User Admin & Establishing Security
- LAB #17: Creating a Navigation Scheme for the End User

