

Introduction

The 7001 course has been developed for controls integrators and project managers that are interested in Access Control and CCTV integration on the EC-Net^{AX} platform. While our existing customer base is already familiar with this platform, the EC-Net^{AX} Security platform has been developed to revolve around a user-friendly web-based configuration system that does not necessitate the use of the workbench. This course covers access control fundamentals, product selection, and both basic and enterprise level configurations. This ensures that the participants complete the course with a full understanding of the solution, as well as the ability to integrate Access Control & CCTV with HVAC controls. The course highlights integration with HVAC on both LonWorks and BACnet platforms and the agenda is well structured to provide coverage of both new and undervalued features of the platform as the EC-Net^{AX} Security framework continues to evolve. The first three days of the course cover Access Control integration, and are concluded with a certification exam which covers all key aspects related to the EC-Net^{AX} Security platform. The fourth day of the course revolves around HVAC and CCTV integration, which is highlighted with a web-based certification from the manufacturer of our CCTV products.

Information

Training period	<ul style="list-style-type: none">• 4 days (8:00 AM to 5:00 PM)
Pre-requisites	<ul style="list-style-type: none">• None
Assets	<ul style="list-style-type: none">• Access Control & CCTV installation• Niagara^{AX} framework

Audience

- Network / System integrators
- Project managers
- Application Engineers

Objectives

Participants will be:

- Defining architecture of access and security systems
- Using Distech Controls EC-Net^{AX} Security Appliance
- Experiencing the configuration of Access and Security systems
- Integrating building automation controllers
- Learning time saving features
- Troubleshooting and Maintenance

Overview

- Security Industry Overview
- EC-Net^{AX} Security Overview

EC-BOS^{AX} Security Hardware

- Setup
- Reader Modules
- Inputs and Outputs
- Readers and strikes
- Request to exit (REX) options



EC-Net^{AX} Security Appliance

- Introduction
- Configuring Readers
- Configuring Doors
- Configuring Inputs and Outputs

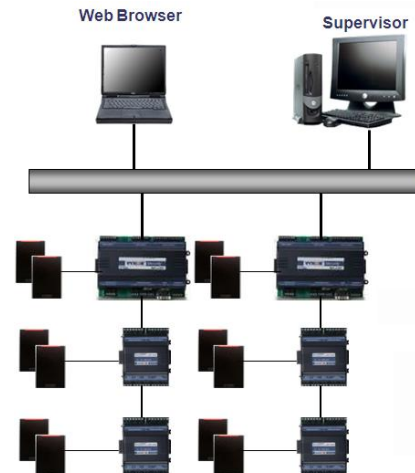


Access Configuration

- Schedules
- Users
- Personnel
- Access rights
- Badges

Extending the System

- Remote Reader module
- Clock-in – Clock-out
- Reconfigure a reader
- Importing personnel information
- Reusing access cards
- Remote I/O module (RIO)
- Elevator control



Intrusion Zones

- Adding intrusion zones
- Occupants and supervisors
- Intrusion keypad
- Zone entry and exit points

EC-Net^{AX} Security Supervisor

- Setting up EC-Net^{AX} Security Supervisor
- Setting up MySQL Database
- Setting up MySQL Workbench
- Setting up MySQL Java Connector
- Configuring the RDBMS
- Configuring the Orion Database
- Joining the EC-BOS^{AX} Security to EC-Net^{AX} Security Supervisor
- User administration and maintenance



Graphics and Reports

- Creating graphics in EC-Net^{AX} Security Appliance
- Widgets
- Adding menus
- Reporting

Maintenance

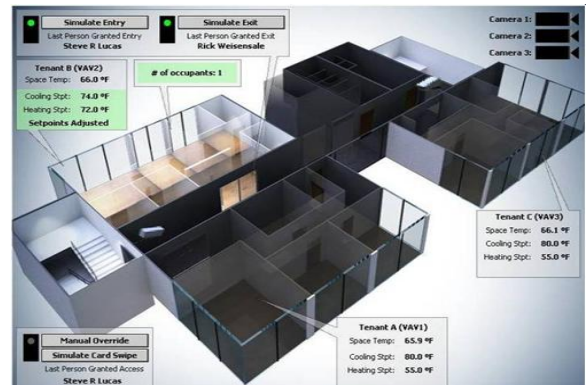
- Copy a station
- Backup an EC-BOS^{AX} Security
- Backup MySQL Database

Troubleshooting

- Controller GUI functions
- Server GUI functions
- Upgrade tools

Retrofit

- Importing personnel data
- Reusing existing access cards
- Reusing existing readers and sensors
- Different card formats

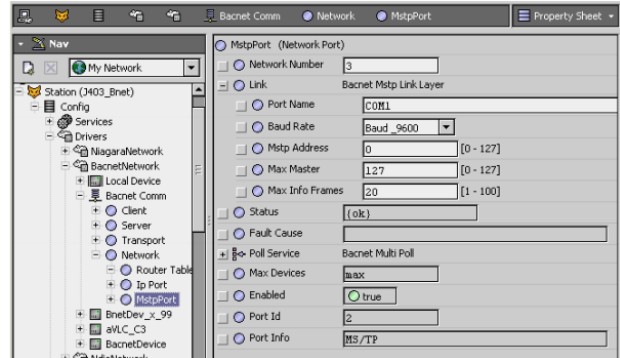


Certification

- Exam preparation
- Exam

Building HVAC Integration

- EC-NetAX Security Pro
- People, doors and readers
- BACnet and LONWORKS
- Creating graphics



Video Integration

- Architecture
- CCTV offers and possibilities
- Hardware and software requirements
- Camera types and networks
- DVR
- Alarm console playback
- Px views and camera controls
- Video surveillance integration (automation)



Dedicated Micros Certification

- Presentation

DISCLAIMER

This training is intended to provide technical information on a particular subject or subjects and is not an exhaustive treatment of such subjects. Accordingly, the information in this training is not intended to constitute application, design, software or other professional engineering advice or services.

Distech Controls does not warrant the completeness, timeliness or accuracy of any of the data contained in this document and web site and may make changes at any time in its sole discretion without notice.