



All-In-One Solution for Mixed-Use Buildings

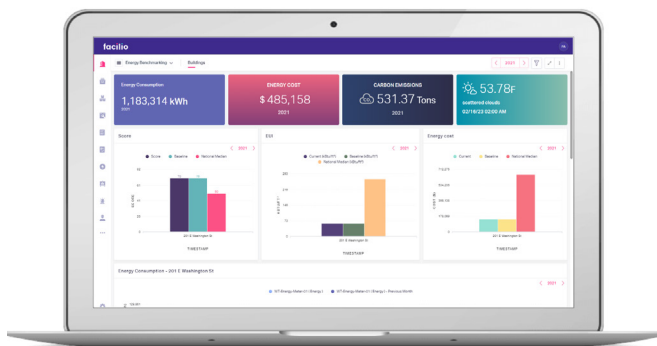
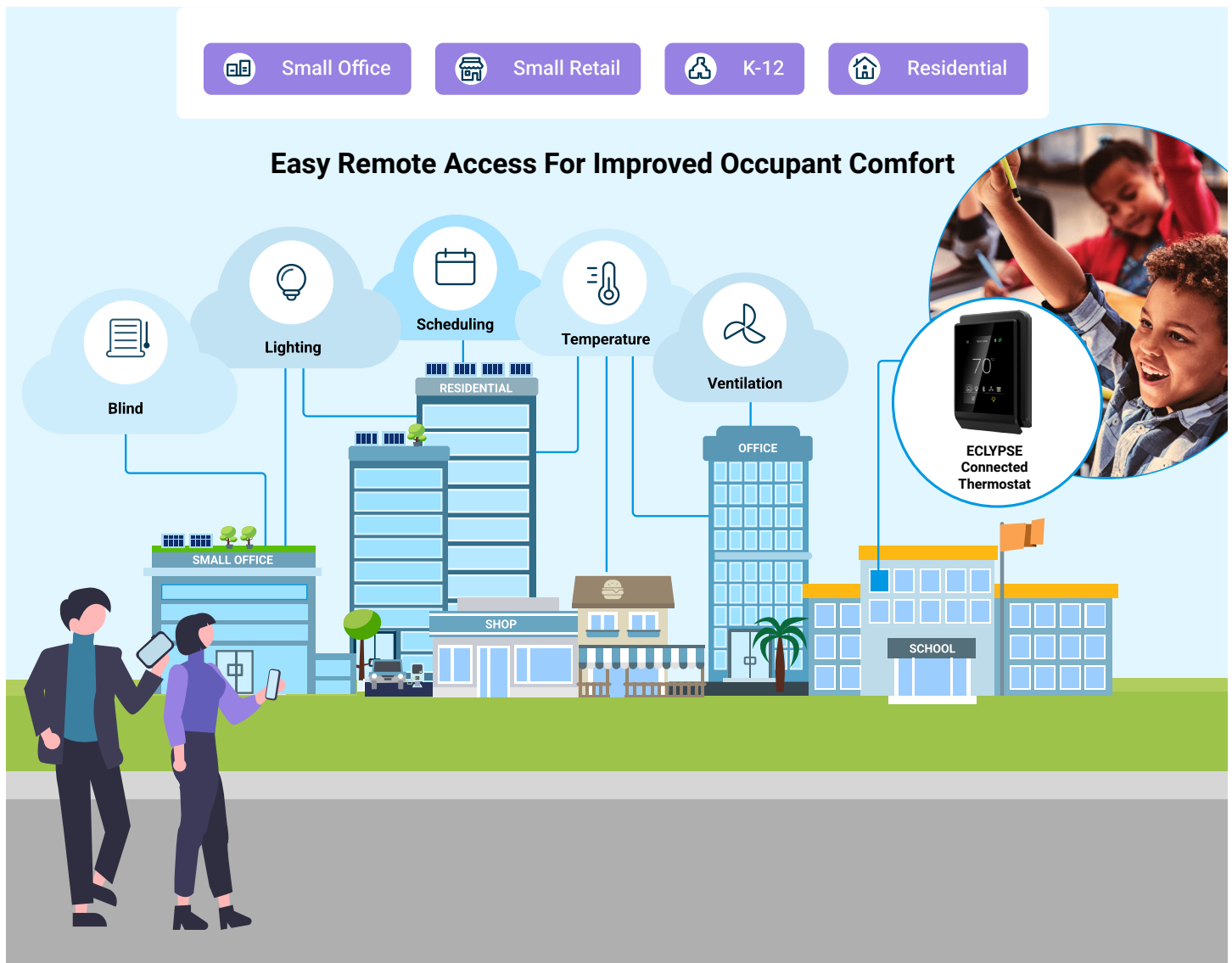
Optimize Your Mixed-Use Environments in Real-time with the ECLYPSE Connected Thermostat for Personalized Occupant Comfort.

Today's mixed-use buildings require both a robust, reliable, and versatile solution for commercial spaces, with a user-friendly UI for residential applications. The ECLYPSE connected thermostat leverages open protocols and the versatility of the Facilio mobile App, so users can program schedules, monitor, and control their spaces in real-time while lowering overall energy consumption and optimizing comfort from anywhere.

- **Better Control:**
Continuously monitor and control temperature, ventilation, lighting systems and other equipment parameters all from one place.
- **Maximize Comfort and Save Energy:**
Get instant feedback on energy efficiencies that can be achieved for different user defined settings without compromising on comfort.
- **Easy Scheduling:**
Create and manage schedules for different equipment parameters in accordance to occupancy levels.



Ensure Greater Occupant Satisfaction, Attraction and Retention



facilio

Portfolio Visibility and Benchmarking

- Energy consumption
- System trend analysis
- Space & asset insights

Remote Command & Control

- Ambient/comfort setting
- Schedule & occupancy based
- Efficiency based optimization

